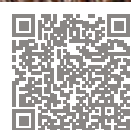




Cover: Z69/50 cognac



## filippo

32702

### Exclusive executive chair.

Striking topstitching in the back is the trademark of **filippo** 32702. The seat and back of the swivel-leg executive chair can be adjusted by motor at the touch of a button. Battery operation is also available at extra cost. The headrest is infinitely adjustable and the 4- and 5-star legs are available in various metallic shades. A contrasting colour thread can be ordered in the leather version.

  
W.SCHILLIG

## ARMCHAIRS



**MDR**  
individual armchair  
incl. motor function

76/95/108/46

**item no. for fct. w/  
battery pack = AKKU**  
(surcharge)

## ACCESSORIES



**SF**  
4-spoke metal leg,  
nickel glazed  
steel



**SX**  
5-spoke-metal-leg  
no surcharge

## filippo

32702



### Flexible headrest

Every article is equipped with stageless headrest adjustment for standard.

### Seat- /back adjustment

The armchairs have a motorised seat- /back adjustment for standard. For surcharge the function is available with battery pack.

### Contrasting thread

In some leather and fabric colours this model can be supplied with a contrasting-coloured thread, at no surcharge.

### Metal colours for legs

The 5-star base F 99 can be ordered in polished chrome, silver, bronze or black. Please indicate the desired look.

### Steel base in special finish

The 4-star steel base F1D has a satin nickel finish and is available for surcharge (art. no. SF).

## ORDER INFORMATION

### Adjustment by motor:

Please pay attention that with using the adjustment by motor with battery pack the battery has to be charged completely every 4 to 6 weeks, also if the function wasn't used regularly..

### Rotary limitation:

The armchairs with stream supply by net cable are defeated by a rotary limitation to maximum

355° what serves for the protection of the net cable.

### Seam appearance:

Decorative, felled or double seams may appear different in fabric and leather versions. For manufacturing reasons, seams may be left out of the fabric version or replaced with simple seams.

### Contrasting thread:

This model is available in leather and some fabric colours with contrasting colour thread at no extra charge. You will find the specified colours in our fabric/leather trolley. Please state the no., otherwise tone-in-tone will be delivered.

**All of the dimensions given are approximate dimensions in cm. We reserve the right to make changes. Dimensions are given as follows: width/depth/height/seat height.**

### The swivel legs protrude. The dimensions are given excluding this protrusion.

Seat depth: approx. **53 cm**  
 Seat depth with function: approx. **99 cm**  
 Overall depth with function: ca. **158 cm**  
 Seat width front: approx. **51 cm**  
 Armpart height: approx. **61 cm**  
 Armpart width: approx. **12 cm**  
**Crease formation:**

Fabric and leather stretch to a lesser or larger extent under the influence of body weight, which can lead to the formation of creases in the cover. This visual change does not affect use, function and life span and it is not a defect.  
**Digital fabric/leather and colour samples:**  
 The visual appearance of the covers and colour samples may vary, samples in accordance - colour and structure deviations possible.

## filippo

32702

### LEGS



5-spoke base **diff. metal col.**

F 99



4-spoke leg, **surcharge** satin nickel

F 1D

#### Metal colours:

Some of the metal legs are available in diffe-

rent metal colours. Please indicate the colour when ordering.

#### Powder-coated:

The colours M21 silver, M56 bronze, M95 anth-

racite and M99 black are powder-coated.

### AVAILABLE METAL COLOURS



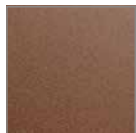
high-gloss chrome

M20



silver

M21



bronze

M56



black

M99

### ORDER CHECKLIST

- Cover
- Leg design
- Metal colour for legs
- Seat- /back adjustment by motor with battery pack (surcharge)
- Contrasting thread



W.SCHILLIG

**filippo**

32702

**LIVING EXAMPLES**



Cover: Z78/28 navy



Cover: Z78/21 steel

## UPHOLSTERED FURNITURE FRAME STRUCTURE

1. **Frame** - metal construction
2. **Seat suspension** with permanently elastic wave springs
3. **Seat upholstery structure of er-go**-PUR-foam with diolen cover
4. **Back suspension** with suspension
5. **Back upholstery structure of er-go**-PUR-foam with diolen cover

### Upholstered furniture from passion.

For almost 75 years, this passion has led to the creation of high-quality and special pieces of furniture and designer furniture - sofas that combine elegant and contemporary design with first-class comfort. We stand for craftsmanship, trend-setting ideas, appealing design and know-how from Germany. The result is upholstered furniture with guaranteed first-class comfort and attention to detail. When selecting the materials used, we pay attention to sustainability and the conservation of resources.

- Traditional craftsmanship down to the last detail
- High-quality, environmentally friendly materials
- Careful & precise workmanship
- Cooperation with renowned furniture designers
- Production according to DIN & RAL quality guidelines of the Deutsche Gütegemeinschaft Möbel e.V.
- Regularly tested product quality „Made in Germany“
- Development at the Upper Franconian location in Ebersdorf near Coburg
- Carefully selected fabric and leather cover collections in many colours for a wide range of requirements.

**W.SCHILLIG** GmbH & Co. KG  
Am Weinberg 20 - 22  
96237 Ebersdorf bei Coburg  
GERMANY  
Telephone: +49 9562 37-0  
Telefax: +49 9562 37-500  
E-Mail: info@schillig.de



quality  
Made in Germany

  
W.SCHILLIG